

IT'S SO EASY!

1



SWEEP

Sweep any loose debris from repair area.

2



FILL

Fill hole with GreenPatch directly from the bag or bulk pile.

3



COMPACT

Add GreenPatch up to 2" lifts and compact. Repeat steps until GreenPatch is 1" above surrounding pavement. Compact- your patch is now complete.



GreenPatch is available in BULK orders

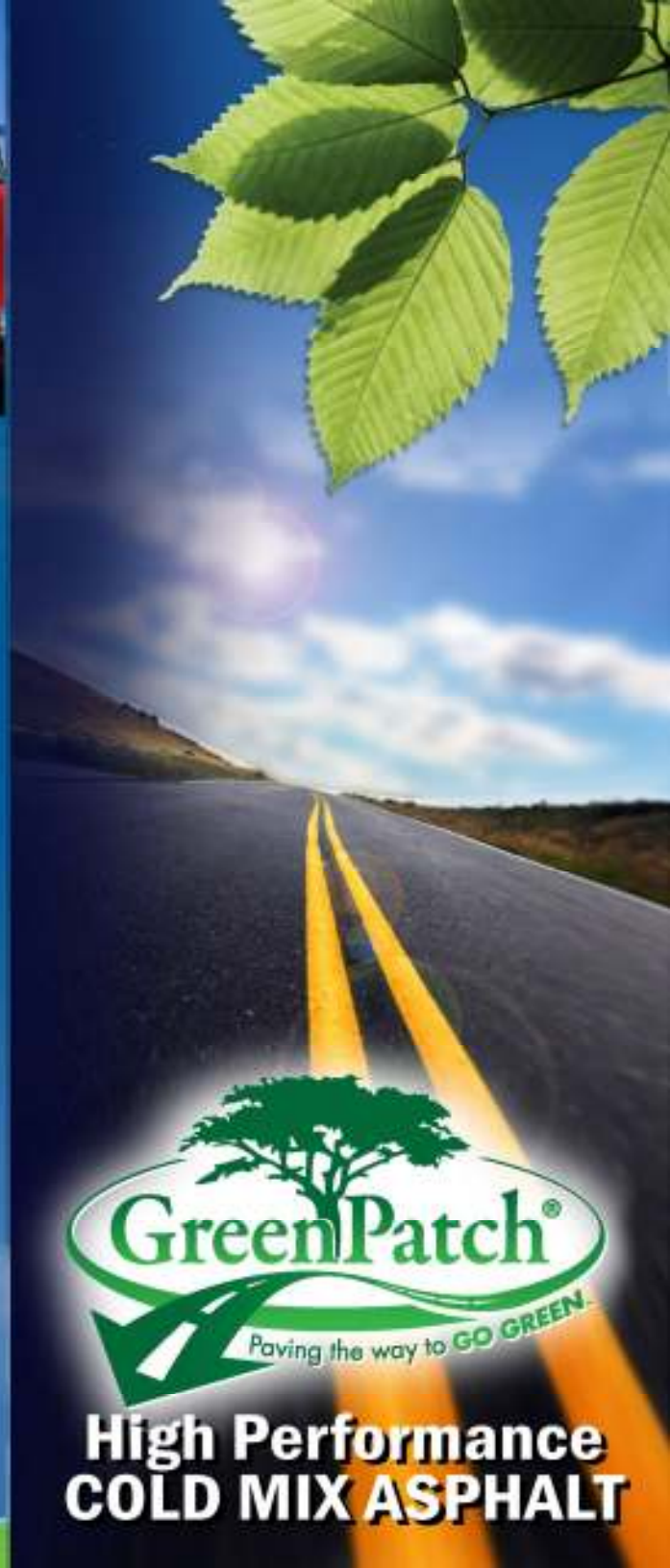
“GreenPatch out-performs conventional cold patch ...FOR LESS!”

We can all do our part to reduce the harmful effects we impose on the environment. GREENPATCH is an excellent opportunity to replace a hazardous product with a cost-effective, high quality break-through solution.



Call: 800.985.9192 or log on to:
www.GREENPATCH.com

Mfg. by: COLD MIX MANUFACTURING




High Performance COLD MIX ASPHALT

The Most TRUSTED Eco-Friendly High Performance Cold Mix Asphalt!



Paving the way to **GO GREEN**

GREENPATCH® is an environmentally friendly cold mix asphalt. It is a direct replacement for traditional cold patch but it does not contain petroleum based solvents or cutbacks. GreenPatch does not leach any hydrocarbons or release any VOC's. This makes GreenPatch a VOC compliant material worldwide. When properly installed, it's permanent and outlasts the surrounding pavement.



**THE PREFERRED ASPHALT
PATCH BY ALL MAJOR ROAD
REPAIR CONTRACTORS
NATIONWIDE!**

GreenPatch has been designed with your budget in mind; it is a cost effective, environmentally friendly, permanent solution. Once you experience the many benefits of GreenPatch, you'll understand why utility companies, road repair contractors, municipalities, water departments, and homeowners are all using GreenPatch; the first truly environmentally friendly high performance cold mix asphalt.



Greenpatch is available in both bulk and bags to meet your needs.

- ✓ Permanent
- ✓ Sustainable
- ✓ Cost-Effective
- ✓ VOC Compliant
- ✓ Available Nationwide
- ✓ DOT Approved
- ✓ Over 50% RAP
(Recycled Asphalt Product)



For more info, log on to:
www.GREENPATCH.com

Order Today-
800.985.9192